



Members of the SNC-Lavalin Group

PROGRAM MANAGEMENT SERVICES

CONTENTS

INCREASED TRANSPARENCY. BETTER DECISION MAKING. IMPROVED PREDICTABILITY.

Major projects and programs can have daunting complexities, are often delayed and endure cost increases.


There may be financial and reputational consequences from the resulting failures, and a negative outcome for all parties. The causes vary, but we believe they are often avoidable.

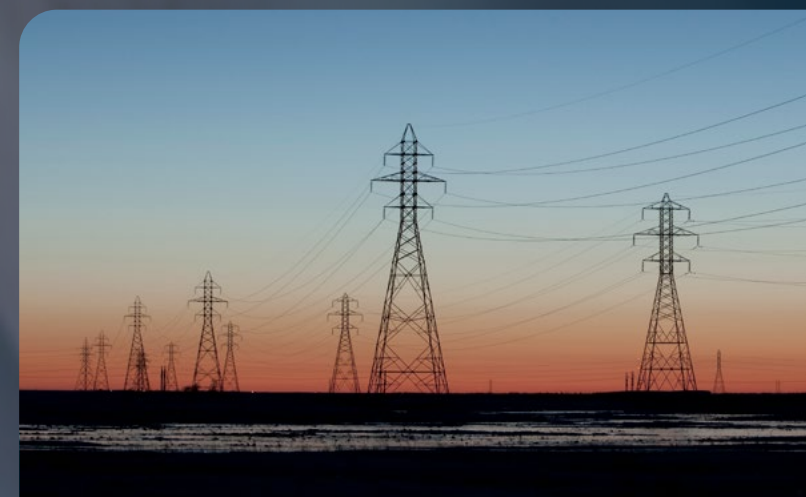
We are transforming program management by connecting people with leading-edge technology and leveraging data to drive real-time insights, control and predictability. We bring the most advanced analytics to programs and harness the power and value of historical data to provide a realistic analytic assessment and predictable outcomes.

Management using extensive and complex Gantt charts and spreadsheets is a thing of the past as we leverage technology to drive an analytics-led approach giving visibility, foresight and predictability.

- We're cutting through the complexity and introducing clarity, insight and control.
- We offer quick access to the best global expertise to develop and deliver programs.
- We've put in place the powerful tools to make predictability the default setting, so there is complete control over every penny and minute spent.
- Social value and sustainability are embedded into our approach so that environmental, social and governance objectives are easily integrated into the program strategy.

Our holistic program management, controls and PMO services de-risk program success, and are complemented by a world-leading [multidisciplinary design, consulting and advisory](#) capability – all from a single source.

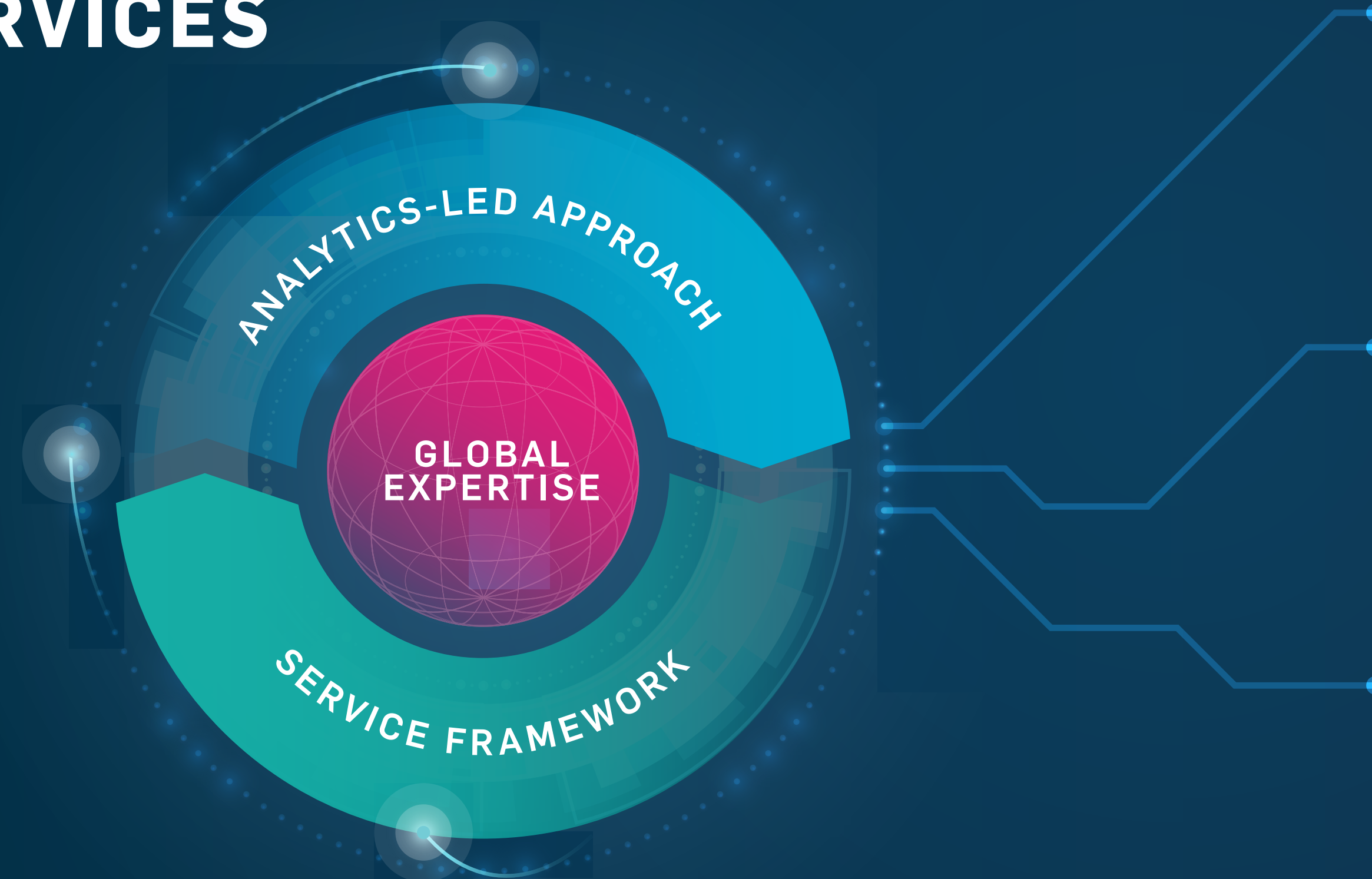
 Use the wheel to navigate between our services.



Engineering Net Zero (ENZ)

Engineering Net Zero is our blueprint for the future. It will steer our approach in every plan and every project.

PROGRAM MANAGEMENT SERVICES



Our advanced analytics-led approach ensures visibility, control and predictability of all aspects of a program. Using an innovative approach to efficiently collect, connect and analyze complex data sets from multiple sources, our data analytics platform enables deep insights, early identification of issues and data-led decision making.

Our collaborative program services community brings the best talent and capability to support local delivery of a program. The expertise and knowledge from 30,000 staff across 50 countries is quickly accessible and our Program Support Office (PSO) in India provides professional and technical capability to augment local delivery teams.

Our adaptable, scalable, best-practice framework brings consistency, flexibility and confidence in our approach. The integrated mobilization methodology means we can set up a program, PMO and controls rapidly and efficiently. Our complementary, market-leading technology options are pre-configured and quick to deploy, avoiding time-consuming procurement and costly configuration.

SERVICE FRAMEWORK

Rapid mobilization.
Best practice delivery.

Use the wheel to navigate between our services.



Our Service Framework brings best practice, consistency and adaptability to our program management, PMO and controls services. It is a toolkit that provides integrated and interchangeable components including processes, templates and technology for all functions and aspects of our service. It is ever-evolving to reflect innovations and improvements from our global community of practitioners giving confidence from being tried and tested in programs around the world.

Best Practice Knowledge Base

A scalable, easy to navigate framework that provides a complete range of standard and tailorable approaches, playbooks and processes to suit any program or PMO.

Integrated Program Controls

Our approach integrates planning, estimating, schedule, cost, risk, change and value, offering visibility and control across all aspects of a program.

Program Accelerator

Standard approach to quickly mobilize a program and PMO with confidence.

Technology Suite

A suite of market-leading software options, pre-configured to support rapid mobilization, avoiding lengthy and costly procurement and configuration.

Control Center

Our Control Center provides visibility of performance, quick access to analytics and all program information, enabling the team to work together physically or virtually using collaborative technology.

ANALYTICS-LED APPROACH

Visibility, control and the insights you need.

Our advanced, analytics-led approach improves transparency, decision making and predictability. We address the challenge of collecting, connecting and analysing complex data-sets from many sources through automation. Our approach saves time and resources and provides the right information to the right stakeholders at the right time.

Integrated Data Management

An integrated, efficient and agile program management service that exploits digital processes to manage programs with predictability and certainty.

Analytics Platform

A rapidly deployable, configurable analytics platform to ingest, query and create intelligence from program data.

Use the wheel to navigate between our services.



GLOBAL EXPERTISE

Providing the best local team
with global support.

GLOBAL
EXPERTISE

Our collaborative program services community of 4000 staff brings the best talent and capability to support local delivery of a program. Furthermore, the expertise and knowledge from all 30,000 staff across 50 countries is quickly accessible and our Program Support Office (PSO) in India provides professional and technical capability to augment local delivery teams.

Project Support Office (PSO)

Our PSO provides remote back-of-house services efficiently and effectively to augment local delivery teams, provide flexible capacity and 24/7 technical support.

Global Community of Professionals

A dedicated community of professionals that stretches across regional boundaries and provides an operational global team.

OUR EXPERIENCE



OUR EXPERIENCE CONTINUED



BEYOND ENGINEERING

Our experts and thought leaders are addressing the big issues and transforming the industry.

THE BENEFITS OF WORKING WITH US



Access to the best global expertise

We ensure success by connecting the best global talent to a program.



Faster deployment

Our Program Accelerator is a structured mobilization methodology that quickly establishes structure, control and visibility.



Ready-to-use Technology Suite

Industry leading processes have been pre-configured into a modular technology suite so we are ready to go at the outset.



Analytics-led approach

Improved decision making from intelligent use of data analytics drives value at all phases of the program lifecycle.



Predictive capabilities

Innovative use of data using our bespoke technology provides predictability through advanced analytics to create certainty of outcomes.



Sustainability and Social Value

Our approach considers more than time, cost and other traditional metrics. We can enable a strategy to deliver and measure Environmental, Social and Governance (ESG) performance that is aligned to our client's corporate objectives.

INTEGRATED SERVICES

Our modular approach combines the benefits of standard, best-practice methods, market leading innovation and customisation to suit programs and major projects.

ABOUT US

Experts at mastering complexity.

We are one of the world's leading professional services and project management organisations, dedicated to engineering a better future for our planet and its people.

We create sustainable solutions leveraging our end-to-end services, connecting people, data and technology to design, deliver and operate the most complex projects across the world.

We work with our clients to achieve net zero emissions goals, and use digital innovations to enable sustainable, efficient and better outcomes for our clients.

We can offer services individually or as a seamless, integrated partner, on small projects, long-term frameworks, and through collaborative roles on major projects, all around the world.

Speaks over 70 Languages
Represents 130+ Nationalities
Approximately 30,500 Employees



CONTACTS

Paul Lakin

GLOBAL PRACTICE DIRECTOR, PROJECT
AND PROGRAM MANAGEMENT (PPM)

Paul.Lakin@atkinsglobal.com

CONTACT 


SNC • LAVALIN
www.snclavalin.com

ATKINS
Member of the SNC-Lavalin Group
www.atkinsglobal.com

FAITHFUL+GOULD
Member of the SNC-Lavalin Group
www.fgould.com

Eric Flaubert
CANADA

Eric.Flaubert
@snclavalin.com

CONTACT 

Jacob Bacon
AUSTRALIA &
NEW ZEALAND

Jacob.Bacon
@snclavalin.com

CONTACT 

Kevin Martin
UNITED STATES

Kevin.Martin
@atkinsglobal.com

CONTACT 

Kingsley Thomas
UK & EUROPE

Kingsley.Thomas
@atkinsglobal.com

CONTACT 

Oliver Kallenborn
MIDDLE EAST & AFRICA

Oliver.Kallenborn
@fgould.com

CONTACT 

Reyaz Ahmed
PROGRAM SUPPORT
OFFICE LEAD, INDIA

Reyaz.Ahmed
@atkinsglobal.com

CONTACT 

Richard Poulin
ASIA

Richard.Poulin
@atkinsglobal.com

CONTACT 


SNC • LAVALIN

ATKINS
Members of the SNC-Lavalin Group

FAITHFUL+GOULD